



# NISTS 2020

## REIMAGINING THE TRANSFER STUDENT EXPERIENCE FEBRUARY 5-7, 2020 • ATLANTA, GEORGIA

The following presentation was given at the 18<sup>th</sup> Annual Conference for the National Institute for the Study of Transfer Students. In some cases, photos have been removed to avoid possible copyright infringement. **Please cite responsibly and direct questions to the original presenter(s).**

### **Practitioner Panel: STEM Transitional Programming**

*Matriculation Trends and Issues, Transition Programs and Services*

Learn what colleges and universities across the country are doing to become more STEM transfer-friendly institutions. The panelists of this session will showcase their successful pre- and post-matriculation programs and provide insight into the struggles and successes that come with redesigning the acclimation process for students pursuing these academically challenging and often highly selective majors. Speakers will provide examples of concrete onboarding tools, partnerships, and grant-funded initiatives that address some of the common issues faced by STEM transfer students today.

Moderator:

**David De Sousa**, Associate Director | Texas A&M University

Panelists:

**Jami Dawkins**, Assistant Director, Transfer Outreach | University of North Carolina, Charlotte

**Jessica Hoffmann**, Academic Advisor | University of South Florida

**Jessica Davis**, Sciences Transfer Advisor | University of South Florida

**Whitney Lovelady**, Associate Director, Transfer Center | Virginia Commonwealth University

**Elizabeth Heck**, Transfer Coordinator | Virginia Commonwealth University

# PRACTITIONER PANEL: STEM TRANSITION PROGRAMMING

Dr. DAVID DE SOUSA, Moderator,  
Texas A&M University

University of North Carolina - Charlotte

University of South Florida

Virginia Commonwealth University

NISTS 2020 ANNUAL CONFERENCE | ATLANTA, GA

# Outline for Today

**1**

**Introductions**

**2**

**Transition  
programs  
breakdown**

**3**

**Questions**



# UNC Charlotte

---

## Collaborations to Foster “Healthy” Transitions for Selective Health Majors

Institutional overview

Target population

Program(s)



# UNC Charlotte by the Numbers

Fastest  
growing  
in NC

**29,600+ total enrollment**

24,000 Undergraduate Students  
pursuing 139 majors

4,000 new  
transfers  
each year

**25,000+ total applications**

Nearly 7,000 transfer  
applications

50% of  
undergrad  
population

**Largest transfer institution in NC**

Over 4,000 new transfers enroll  
each year

# UNC Charlotte: Target Population

Transfer Students pursuing selective “Health” majors

**Majors of focus:** Nursing, Exercise Science. Public Health & Social Work

## **Student Challenges:**

- Prerequisites (may not be available prior to transferring)
- Upper-division requirements (may differ from traditional transfer requirements)
- Additional application process (may have different deadlines than transfer admissions deadlines)

# Collaborative Efforts & Programs

**Easily  
Accessible &  
Comprehensive  
Transfer Tools**

**For Students & CC Advisors**

Outlining equivalent prerequisites, differences in upper-division processes, & ideal transfer timelines

**Pre - Transfer  
Advising Events  
at local CCs**

**Admissions & Advisors**

Advising days on site for transfer students to speak directly to UNC Charlotte Advisor

**Pre-Orientation  
for transfer  
students in  
selective health  
majors**

**80% Success Rate**

Encouraging summer starts that will keep students on track for upper-division



# University of South Florida

---

## STEER Peer Mentor Program

Institutional overview

Target population

Program





# By the Numbers



University of South Florida

Research One State University

37,000+ Undergrads

- 48% Transfer Students

College of Arts and Sciences

14,000+ Undergrads

- 43% transfers

School of Natural Science and Mathematics

7,000+ Undergrads

- 40% Transfer Students

1,845 Florida CC Transfers

- 47% Transfer from HCC



# USF: STEER Target Populations

STEER Grant: **S**ystemic **T**ransformation of **E**ducation through **E**vidence-Based **R**eforms between HCC and USF  
STEM Peer Mentor Programs are one portion of the overall grant

## HCC Transfers

Science and Math Majors



## Peer Mentors

Building Transferable Skills

Connection to University and Discipline

Future Success

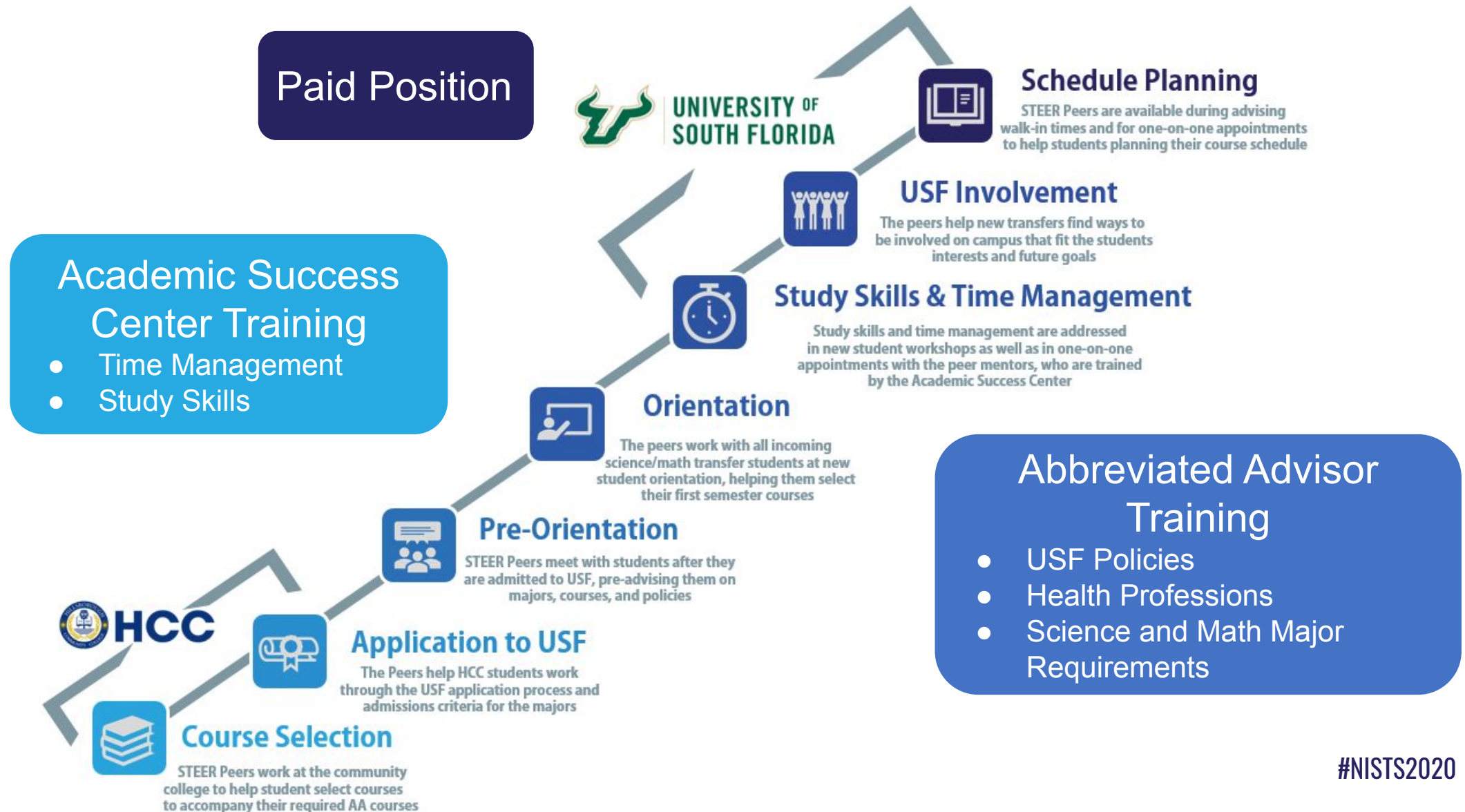
“Since leaving the peer mentor position I had an entire year working as a research coordinator at Moffitt cancer center. This July, I started medical school in South Carolina.”

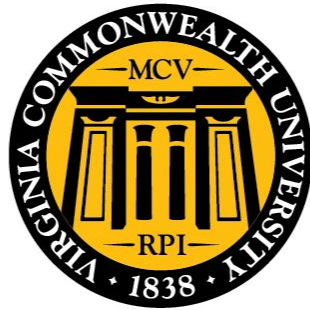


This material is based on work supported in part by the National Science Foundation under Grant #DUE 1525574 Systemic Transformation of Education through Evidence-Based Reforms (STEER). Any opinions, findings, and conclusions or recommendations expressed in this material are those of the author(s) and do not necessarily reflect the views of the National Science Foundation."



# STEER Peer Mentor Program





**VCU**

# Virginia Commonwealth University

---

## STEM Transitions

Institutional overview

Target population

Program(s)



4,000  
first year  
students

Diverse  
Campus

Unique  
Challenges

## 31,076 Total Enrollment

24,058 undergraduates

23% in STEM majors

~ 2,200 transfer students per year

## One-Third Pell-eligible

45% minority students

30% underrepresented minority

## Urban campus + teaching hospital

“Community Engaged” + “Very High Research Activity”


Arts to Engineering to Medicine

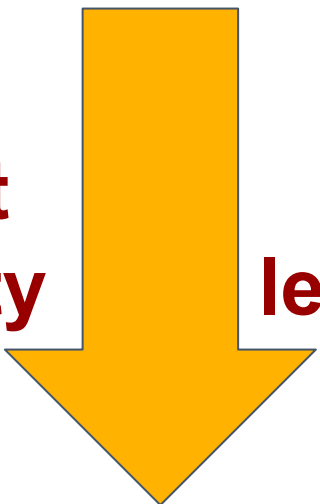
# By the Numbers



# VCU: Target Population

Transfer students make up **27%** of new science majors

**DFW rates**  **30% higher**

**Interact w/ faculty**  **~30% less likely**

**Goal:**

Lower DFW rates and retain transfer students in STEM majors.

# VCU: STEM Transitions

STEM Transitions offers resources and support for students who plan to transfer to VCU to complete their bachelor's degree in a math or science discipline

- Transfer Success Program
- Peer Mentor Program
- Transfer Maps
- Pre-Enrollment Advising
- Second Semester Reboot
- VCU Fridays
- Program Website

[transfer.vcu.edu/initiatives/stem](https://transfer.vcu.edu/initiatives/stem)



**Get Out Your Mobile Device!**  
*It's polling time!*



# In one word, tell us your biggest transfer challenge:

## Join by Web



- 1 Go to **PollEv.com**
- 2 Enter **JESSICAHOFFM479**
- 3 Respond to activity

## Join by Text

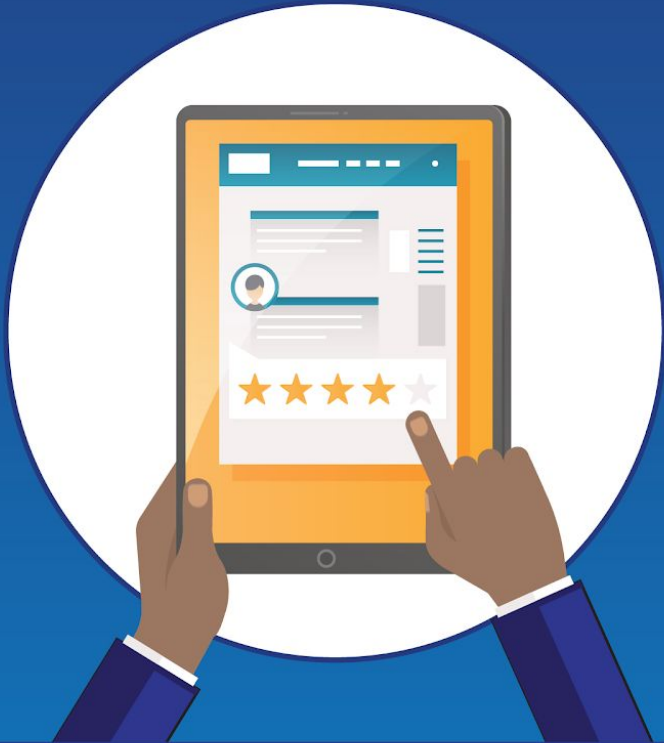


- 1 Text **JESSICAHOFFM479** to **22333**
- 2 Text in your message



# QUESTIONS

# PLEASE COMPLETE A SESSION EVALUATION



**AVAILABLE IN THE MOBILE APP**



**OR VIA THE QR CODE ABOVE**

<https://tinyurl.com/NISTSEval>