



# NISTS 2020

## REIMAGINING THE TRANSFER STUDENT EXPERIENCE FEBRUARY 5-7, 2020 • ATLANTA, GEORGIA

The following presentation was given at the 18<sup>th</sup> Annual Conference for the National Institute for the Study of Transfer Students. In some cases, photos have been removed to avoid possible copyright infringement. *Please cite responsibly and direct questions to the original presenter(s).*

### **Three Column Plans: A Tool to Align AAS, BAAS, and BS AAS Pathways to Increase Collaboration In/Between Institutions**

*Curricular Alignment or Degree Pathways, Partnerships and Collaboration*

Three column plans show how AAS credits and BAAS focus areas align with BS major requirements. This simplifies choice-making by community college transfer students and advisors, and increases clear partnership between university departments to best meet the needs of each student. These plans can also lead to shared recruiting and advising efforts to increase overall university transfer enrollment and degree completion.

**Peggy Shadduck**, Associate Dean; Director of Applied Arts and Sciences  
University of North Texas

# THREE COLUMN PLANS:

A tool to align AAS, BAAS, and BA/BS pathways to increase collaboration in/between institutions

PEGGY SHADDUCK, PH.D.

ASSOCIATE DEAN  
APPLIED ARTS AND SCIENCES DIRECTOR  
UNIVERSITY OF NORTH TEXAS

NISTS 2020 ANNUAL CONFERENCE | ATLANTA, GA

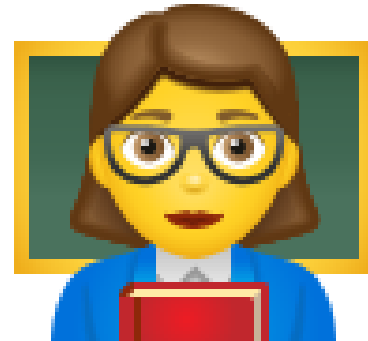
# GATHER BY FUNCTIONAL GROUP

COMMUNITY  
COLLEGE FACULTY



[icons8.com/icons//teacher](https://icons8.com/icons//teacher)

4-YEAR COLLEGE  
FACULTY



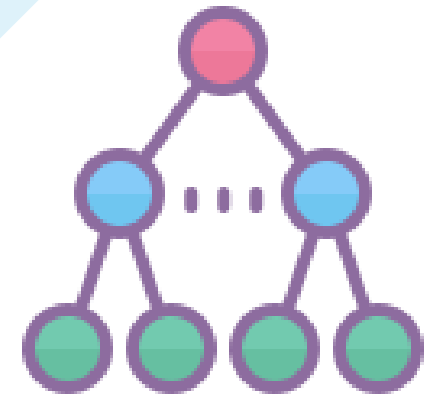
[icons8.com/icons/woman-teacher](https://icons8.com/icons/woman-teacher)

ADVISOR



[icons8.com/icons/consultation](https://icons8.com/icons/consultation)

ADMINISTRATOR



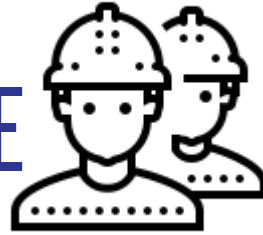
[icons8.com/icons/active-directory](https://icons8.com/icons/active-directory)

# FROM YOUR GROUP'S POINT OF VIEW ...

- Does your state and/or accrediting body have any special rules or restrictions related to technical coursework?
- Does your institution have a differentiation between technical degrees and academic degrees?
- How is transfer of technical students from community college to university affected by those rules?
- Can a technical community college student transfer into an academic BA or BS degree program?
- If so, what are the challenges or barriers?

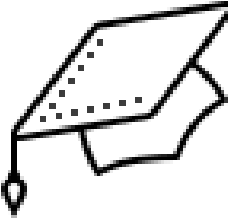
# IN TEXAS ...

## TECHNICAL AAS DEGREE



- 15 hours of core curriculum
- 45 hours of workforce education (WE) coursework
- Different faculty credentialing guidelines for WE faculty
- Most WE credit does not transfer to a university

## ACADEMIC AA/AS DEGREE



- Full 42 hours of core curriculum
- 18 hours of other (usually) academic coursework
- MA/MS degree credential
- Credit should all transfer to a university

# SO... TEXAS HAS B.A.A.S. DEGREES

## BACHELOR OF APPLIED ARTS AND SCIENCES

- We believe UNT's was the first one, started in 1974.
- Designed to accept technical/workforce credit, including military academic credit
- Upon transfer, students
  - complete the core (27 more hours)
  - complete 2-3 concentrations **or a focus area** at the upper level
  - complete 3 unifying courses
  - complete at least 36 hours of upper level coursework

UNT®



**BACHELOR OF  
APPLIED ARTS  
& SCIENCES**

Experience  
Discovery  
Collaboration  
Application

# SO WHAT'S THE PROBLEM?

1

STUDENTS IN AAS PROGRAMS DO NOT KNOW THEY CAN EARN A BACHELOR'S DEGREE

2

FACULTY IN TRADITIONAL PROGRAMS AT THE UNIVERSITY WANT STUDENTS TO CONSIDER THEIR PROGRAMS, TOO

3

THE THREE OPTIONS CAN BE CONFUSING FOR ADVISORS AND STUDENTS AS WELL AS FACULTY AND ADMINISTRATORS

**PEGGY'S  
SOLUTION:  
THE THREE COLUMN  
PLAN**

El Centro College to UNT Hospitality

	Option 1: Three concentrations in the B.A.A.S. degree	CH	Option 2: Declared Hospitality Services focus area in the B.A.A.S. degree	CH	Option 3: BS in Hospitality	CH
<b>El Centro course</b>						
RSTO 1313	Occupational	3	Occupational	3	***	3
CHEF 1305	Conc. #1	3	Conc. #1	3	Major requirement (in place of UNT HMGT 1420)	3
CHEF 1301	Conc. #1	3	Conc. #1	3	Major requirement (in place of UNT HMGT 1470)	3
MATH core course	Core (020)	3	Core (020)	3	Core (020)	3
HAMG 1321	Elective	3	Elective	3	Major requirement (in place of UNT HMGT 1500)	3
RSTO 1301	Occupational	3	Occupational	3	***	3
RSTO 1304	Occupational	3	Occupational	3	Major requirement (in place of HMGT 3250)	3
Speech core course	Core (090)	3	Core (090)	3	Core (090)	3
English core course	Core (010)	3	Core (010)	3	Core (010)	3
CHEF 2331	Conc. #1	3	Conc. #1	3	***	3 (0)
Behavioral science core course	Core (080)	3	Core (080)	3	ECON 2301 required Core (080)	3
HAMG 2307	Elective	3	Elective	3	Major requirement (in place of UNT HMGT 3300)	3
RSTO 1325	Occupational	3	Occupational	3	***	3 (0)
RSTO 2301	Occupational	3	Occupational	3	***	3 (0)
Arts core course	Core (050)	3	Core (050)	3	Core (050)	3
RSTO 1380	Elective	3	Elective	3	n/a	3 (0)



## El Centro College to UNT Hospitality

	<b>Option 1: Three concentrations in the B.A.A.S. degree</b>	<b>CH</b>	<b>Option 2: Declared Hospitality Services focus area in the B.A.A.S. degree</b>	<b>CH</b>	<b>Option 3: BS in Hospitality</b>	<b>CH</b>
<b>El Centro course</b>						
<b>RSTO 1313</b>	<b>Occupational</b>	<b>3</b>	<b>Occupational</b>	<b>3</b>	<b>***</b>	<b>3</b>
<b>CHEF 1305</b>	<b>Conc. #1</b>	<b>3</b>	<b>Conc. #1</b>	<b>3</b>	<b>Major requirement (in place of UNT HMGT 1420)</b>	<b>3</b>
<b>CHEF 1301</b>	<b>Conc. #1</b>	<b>3</b>	<b>Conc. #1</b>	<b>3</b>	<b>Major requirement (in place of UNT HMGT 1470)</b>	<b>3</b>
<b>MATH core course</b>	<b>Core (020)</b>	<b>3</b>	<b>Core (020)</b>	<b>3</b>	<b>Core (020)</b>	<b>3</b>
<b>HAMG 1321</b>	<b>Elective</b>	<b>3</b>	<b>Elective</b>	<b>3</b>	<b>Major requirement (in place of UNT HMGT 1500)</b>	<b>3</b>
<b>RSTO 1301</b>	<b>Occupational</b>	<b>3</b>	<b>Occupational</b>	<b>3</b>	<b>***</b>	<b>3</b>
<b>RSTO 1304</b>	<b>Occupational</b>	<b>3</b>	<b>Occupational</b>	<b>3</b>	<b>Major requirement (in place of HMGT 3250)</b>	<b>3</b>
<b>Speech core course</b>	<b>Core (090)</b>	<b>3</b>	<b>Core (090)</b>	<b>3</b>	<b>Core (090)</b>	<b>3</b>

Arts core course	Core (050)	3	Core (050)	3	Core (050)	3
RSTO 1380	Elective	3	Elective	3	n/a	3 (0)
RSTO 1306	Occupational	3	Occupational	3	***	3 (0)
IFWA 1318	Conc. #1	3	Conc. #1	3	Major requirement (in place of UNT HMGT 1450)	3
RSTO 2307	Occupational	3	Occupational	3	***	3 (0)
RSTO 2380	Elective	3	Elective	3	***	3 (0)
	All credit hours transferred	60	All credit hours transferred	60	39 credit hours transferred	60 (39)

UNT course						
English core course	Core (010)	3	Core (010)	3	Core (010)	3
Science core course	Core (030)	3	Core (030)	3	Core (030)	3
Science core course	Core (030)	3	Core (030)	3	Core (030)	3
Cultures core course	Core (040)	3	Core (040)	3	Core (040)	3
History core course	Core (060)	3	Core (060)	3	Core (060)	3
History core course	Core (060)	3	Core (060)	3	Core (060)	3
Poli. Sci. core course	Core (070)	3	Core (070)	3	Core (070)	3
Poli. Sci. core course	Core (070)	3	Core (070)	3	Core (070)	3
Component core course	Core (090) – Upper level	3	Core (090) – Upper level	3	Core (090) – Upper level	3

BAAS 3000	Unifying	3	Unifying	3	n/a	0
BAAS 3020	Unifying	3	Unifying	3	n/a	0
BAAS 4100	Unifying	3	Unifying	3	n/a	0
CMHT 2790	n/a	0	n/a	0	Major requirement	3
CMHT 4750	n/a	0	n/a	0	Major requirement	3
HMGT 3100	Conc. #2	3	Focus	3	n/a	0
HMGT 3200	n/a	0	n/a	0	Major requirement	3
HMGT 3260	Conc. #2	3	Focus	3	Major requirement	3
HMGT 4210	n/a	0	n/a	0	Major requirement	3
HMGT 4300	n/a	0	Focus	3	n/a	0
Focus choice	n/a	0	Focus	3	n/a	0
Focus choice	n/a	0	Focus	3	n/a	0
Upper level course	Conc. #3	3	n/a	0	n/a	0
	UNT credit hours	60	UNT credit hours	60	UNT credit hours	81
	Total credit hours	120	Total credit hours	120	Total credit hours	141

# HOW DOES A THREE COLUMN PLAN HELP ME?

1

STUDENTS IN AAS PROGRAMS DO NOT KNOW THEY CAN EARN A BACHELOR'S DEGREE  
CONVERSATIONS ABOUT THE PLAN INFORM ADVISORS AND FACULTY AT COMMUNITY COLLEGES

2

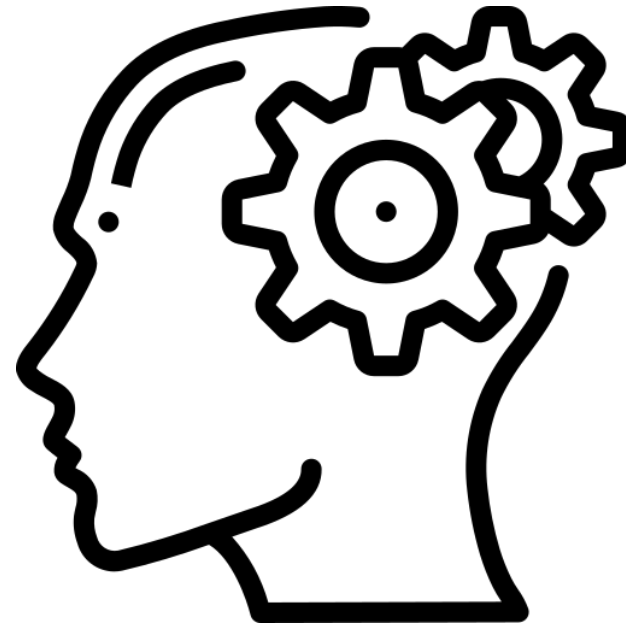
FACULTY IN TRADITIONAL PROGRAMS AT THE UNIVERSITY WANT STUDENTS TO CONSIDER THEIR PROGRAMS, TOO  
WE CAN BUILD TRUST, MORE FOCUS AREAS, AND CO-ADVERTISING WITH UNT DEPARTMENTS

3

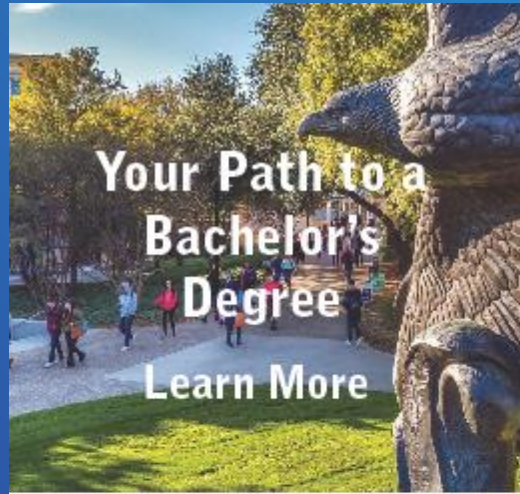
THE THREE OPTIONS CAN BE CONFUSING FOR ADVISORS AND STUDENTS AS WELL AS FACULTY AND ADMINISTRATORS  
ADVISORS AND FACULTY SEE A DIRECT COMPARISON INCLUDING TO CALCULATE TIME AND COST

**THINK  
PAIR  
SHARE**

**COULD A THREE COLUMN PLAN  
APPROACH ADDRESS ANY OF  
THE CHALLENGES YOU  
IDENTIFIED WITH YOUR  
AFFINITY GROUP EARLIER?**



# HOW ARE WE CO-ADVERTISING WITH OTHER UNIVERSITY PROGRAMS?



Not everyone takes the same path to earning their bachelor's degree. The Bachelor of Applied Arts and Sciences (B.A.A.S.) degree program is transfer-friendly and offers three unique paths to a Bachelor's degree in hospitality services or management.

Whether you are a transfer student, a veteran, active-duty military, or a non-traditional student, your credits are accepted, and you can complete your more quickly in a variety of locations or ways, online, face-to-face, in Denton, Frisco, or at the Collin Higher Education Center.

## New College B.A.A.S.

### Contact Us

[Baas.unt.edu/](http://Baas.unt.edu/)

UNT Main Campus, Denton  
Collin Higher Education Center,  
McKinney  
UNT at Frisco  
[baas@unt.edu](mailto:baas@unt.edu)  
940-565-2352



## Bachelor of Applied Arts and Sciences



# HOW ARE WE CO-ADVERTISING WITH OTHER UNIVERSITY PROGRAMS?

## ALL PATHS LEAD TO A BACHELOR'S DEGREE

1

### B.A.A.S. Degree With Flexible Concentrations

120 total credit hours  
36 upper level credit hours  
of which 24 are completed at UNT

Reduced time to graduation. Bring in the credits you have from technical, military, or college courses and have them applied to the degree.

Work with an advisor to select courses and develop concentrations that fit best for you.

Tailor your concentrations towards the career you want.

Major is Applied Arts and Sciences.

2

### B.A.A.S. Degree With a Focus in Hospitality Services

120 total credit hours  
36 Upper level credit hours  
of which 24 are completed at UNT

Reduced time to graduation. Bring in the credits you have from technical, military, or college courses and have them applied to the degree.

Work with an advisor to select the specific courses in the 24 credit hour focus area in Hospitality Services. The named focus area will appear on your diploma.

3

### B.S. in Hospitality Management

141 total credit hours  
At least 30 credit hours must be completed at UNT

Bring in up to 39 of your college credits and pursue a degree in Hospitality Management.

Requires 54 hours of hospitality majors courses at UNT.

Students with a degree in hospitality management are prepared to enter high growth global industries.



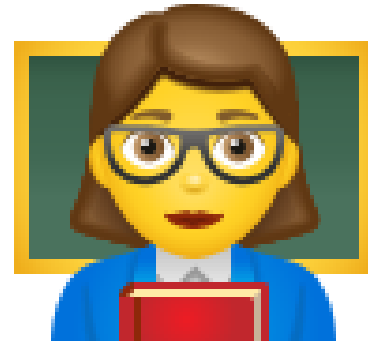
# REORGANIZE YOURSELVES - FOUR NEW GROUPS - MIXING PEOPLE WITH DIFFERENT RESPONSIBILITIES

COMMUNITY  
COLLEGE FACULTY



[icons8.com/icons//teacher](https://icons8.com/icons//teacher)

4-YEAR COLLEGE  
FACULTY



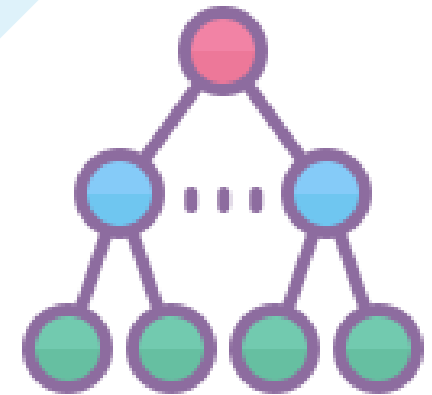
[icons8.com/icons/woman-teacher](https://icons8.com/icons/woman-teacher)

ADVISOR



[icons8.com/icons/consultation](https://icons8.com/icons/consultation)

ADMINISTRATOR



[icons8.com/icons/active-directory](https://icons8.com/icons/active-directory)

# FROM MIXED GROUP'S VIEWPOINTS ...

- Come up with at least one example in which a three column planning process could assist in overcoming an intra- or inter-institutional barrier to transfer of technical students.
- Be prepared to briefly share your best idea.



In the last couple of minutes,  
please write down one idea to take back to your campus.



To reach Peggy: [peggy.shadduck@unt.edu](mailto:peggy.shadduck@unt.edu)