

The following presentation was given at the 20th Annual Conference for the National Institute for the Study of Transfer Students. In some cases, photos have been removed to avoid possible copyright infringement. Please cite responsibly and direct questions to the original presenter(s).

Sponsored Session

2380 - Collaborative Partnerships to Create Degree Pathways

Credits and Degree Pathways, Partnerships and Collaboration

Transferring from a community college to a four-year institution can be challenging. Credits a student has already earned may not be applied to their four-year degree which then leads to increased costs and delayed completion of a degree. This session focuses on collaboration between community college programs and four-year programs to create a smooth transfer pathway that maximizes the credits a student is able to apply to their four-year program.

Tricia Berry, *Associate Dean and Director*

Keith Smith, *Dean and Vice-President*

Purdue University Global

Collaborative Partnerships to Create Degree Pathways

February 2, 2022

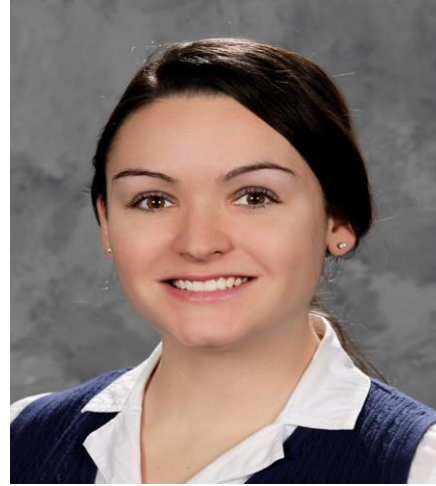


Meet Today's Presenters



Dr. Keith Smith

Dean and Vice President,
School of Health Sciences
ksmith3@purdueglobal.edu



Allegra Fowler

Senior Director
Transfer and Articulation
alfowler@purdueglobal.edu



Dr. Tricia Berry

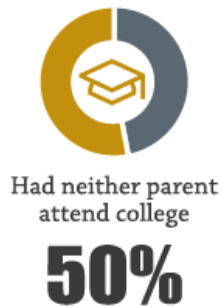
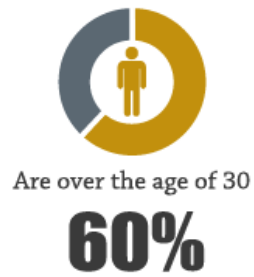
Associate Dean
Clinical and Practicum Programs
tberry@purdueglobal.edu

Who Is Purdue University Global?

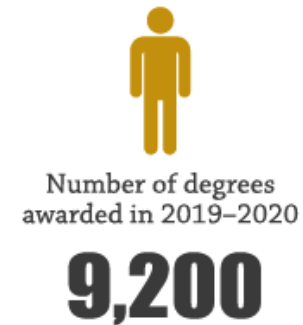
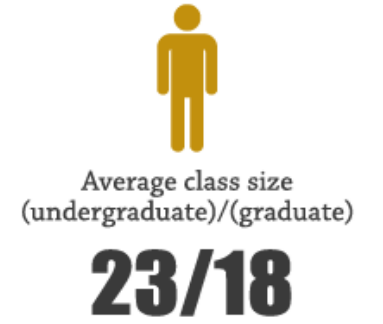
Public (within the Purdue University system), Online, Adult Learner

Our Students

Percentage of students who:



Our Institution



Source: Purdue Global Office of Reporting and Analysis, 2018–2019 academic year, August 2019.

Quick statistics about PG transfers in 2021

2,000

Transfer Institutions

Last year we transferred credit from more than 2,000 different higher ed institutions.

7,000

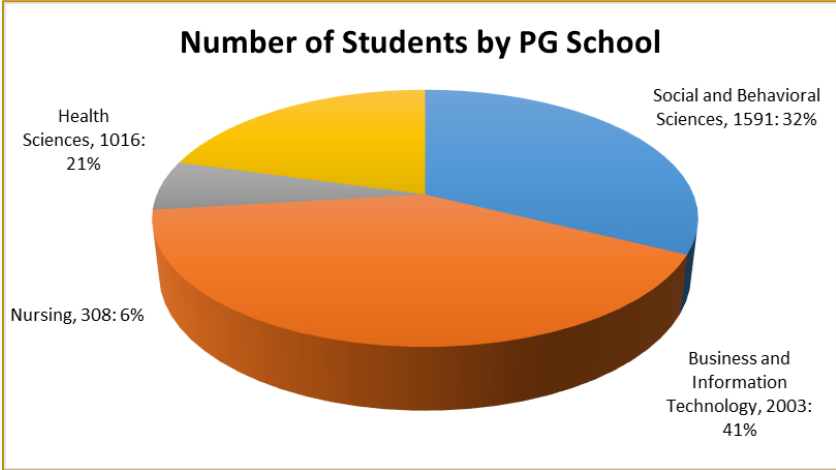
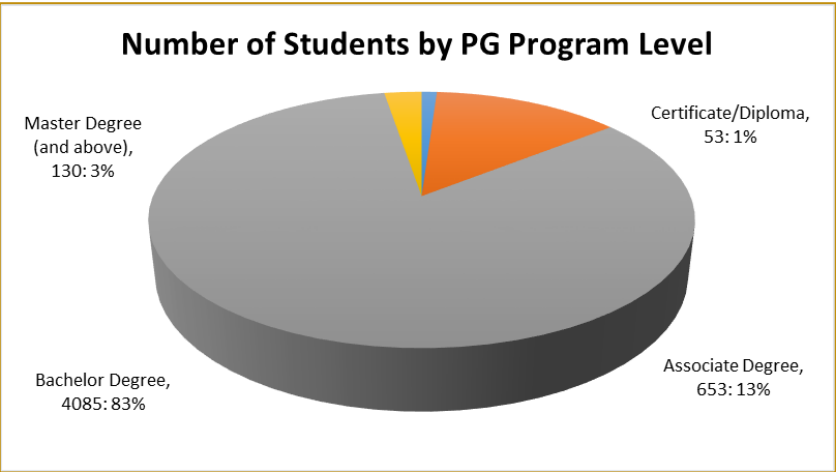
Transfer Students

Over 7,000 students received transfer credit.

2,500

PLA Students

Over 2,500 students received credit for prior learning, including military credit.



Transfer friendly policies & programs

- We allow up to 75% of our bachelor requirements to be fulfilled via transfer credit/prior learning credit/course challenge assessments.
- We design our bachelor programs to maximize transfer credit options
 - Significant number of open electives in undergraduate programs
 - Minimized specific lower-level courses to avoid
 - Standardized general education program
 - 3+1 format for health science bachelor programs
- We accept the Indiana College Core General Education credential
- We offer Advanced Start options
 - Allows select course waivers
 - Based on completion of prior Associate's degree
- We utilize the course equivalency network which allows for consistent evaluation process

Clear pathways/mappings

Purdue University Global Program Pathway									
Central Maine Community College Associate of Science in Nursing				Purdue University Global Bachelor of Science in Nursing—Advanced Start					
<i>For information about transferring to Purdue University Global, call 844-PURDUE-G to speak with an advisor.</i>									
Associate's Degree Courses									
Completed Course	Credit	PG Equivalent	Applies Toward	Completed Course	Credit	PG Equivalent	Applies Toward		
BIO115 Anatomy and Physiology I (Lec.)	3	LSC4.5L	General Education Elective	BIO211 Microbiology (Lec.)	3	SC246	SC246 Fundamentals of Microbiology		
BIO116 Anatomy and Physiology I (Lab)	1	LSC1.5L	RN-to-BSN Credit	BIO212 Microbiology (Lab)	1				
ENG101 College Writing or ENG105 College Writing Seminar	3 (4)	CM107	CM107 College Composition I	NUR212 Nursing Across the Life Span II	9	NU13.5L	RN-to-BSN Credit		
NUR112 Foundations of Nursing/Nursing Care of Adults	9	NU13.5L	RN-to-BSN Credit	PSY111 Developmental Psychology	3	PS4.5L	RN-to-BSN Credit		
NUR115 Medication Preparation, Administration, and Dosage Calculations	1	NU1.5L	RN-to-BSN Credit	NUR213 Nursing Across the Life Span III	9	NU13.5L	RN-to-BSN Credit		
BIO117 Anatomy and Physiology II Lecture	3	LSC4.5L	General Education Elective	COM100 Public Speaking	3	CM214	RN-to-BSN Credit		
BIO118 Anatomy and Physiology II Lab	1	LSC1.5L	RN-to-BSN Credit	Elective: Humanities	3	HU4.5L	Arts and Humanities Elective		
NUR121 Nursing Across the Life Span I	10	NU15L	RN-to-BSN Credit	Directed: MAT135 Statistics	3	MM207	MM207 Statistics		
PSY101 Introduction to Psychology	3	PS124	Social Science Elective						
Total Transferable Associate's Degree Credits		68 semester (102 quarter)							
Bachelor's Degree Requirements Remaining									
Purdue Global Course				Quarter Credits	Purdue Global Course				Quarter Credits
CM220 College Composition II (ENG221—may be taken at CMCC)				5	NU460 Community and Public Health				6
CS212 Communicating Professionalism				5	NU497 Chronicity within Nursing Care—Clinical				6
NU300 Professional Leadership Transitions				6	NU498 Bachelor's Capstone in Nursing—Systems Clinical				6
NU320 Evidence-Based Nursing Practice				6	300–400 Level Nursing Electives (2 courses)				10
NU333 Physical Assessment for the Professional Nurse				5	100–400 Level Open Electives (3 courses—may be taken at CMCC)				17
NU420 Leadership and Management in the Changing Health Care Environment				6					
Total Bachelor's Degree Credits Remaining				78 quarter (52 semester)					
Worksheet Notes: Students must earn a grade of C- or better for course transfer. [Date: 12/7/2021]				Purdue University Global is accredited by the Higher Learning Commission (HLC).					
<i>This worksheet does not constitute an official evaluation of a student's prior learning. All students who possess transfer credit and prior learning are encouraged to submit evidence of such and apply for credit evaluations. All credit is reviewed on a case-by-case basis, and is awarded ultimately at the discretion of the University. To be considered, official transcripts must be sent to the University Office of the Registrar for evaluation.</i>									

Thank you!

