

NISTS 2023

BE A CONNECTOR FOR TRANSFER STUDENT SUCCESS

Virtual • February 1-3 | Portland, OR • February 22-24

The following presentation was given at the 21st Annual Conference for the National Institute for the Study of Transfer Students. Please cite responsibly and direct questions to the original presenter(s).

Facilitated Discussion

2849 - Evolution of Transfer Centers: A Future-Thinking Approach to Building Transfer Centers and Support Services

Partnerships and Collaboration, Transition Programs and Supports

Utilizing a futures-thinking mindset, we will explore the structure of two newly established Transfer Centers, and collectively discover how we can influence a preferred future for transfer centers and services to support equitable success of transfer students in the evolving landscape of higher education.

Randi Harris, *Director, Transfer & Returning Student Resource Center*

Kara Hayes, *Student Success Manager*

Portland State University

Bernard Huggins, *Associate Director, Student Coaching*

University of Central Florida

EVOLUTION OF TRANSFER CENTERS: A FUTURES-THINKING APPROACH TO BUILDING TRANSFER CENTERS AND SUPPORT SERVICES

RANDI HARRIS
KARA HAYES
BERNARD HUGGINS

AS HIGHER EDUCATION REACTS TO THE ONGOING SHIFTS IN ENROLLMENT AND STUDENT PREFERENCES AND ACTIONS...

What is the biggest challenge you foresee for transfer centers and transfer services?

What opportunities might emerge?

How can we influence the future of transfer student support and services?

IMAGINE IT IS THE YEAR 2038...

How are your transfer students engaging with your center or service?

How has this center or service impacted the transfer culture at your institution?

INTRODUCTIONS

THE EVOLUTION OF TRANSFER CENTERS:
A FUTURES-THINKING APPROACH TO BUILDING TRANSFER CENTERS AND SUPPORT SERVICES

Randi Harris

Director, Transfer & Returning
Student Resource Center
Portland State University



Kara Hayes

Student Success Manager, Transfer &
Returning Student Resource Center
Portland State University



Bernard Huggins

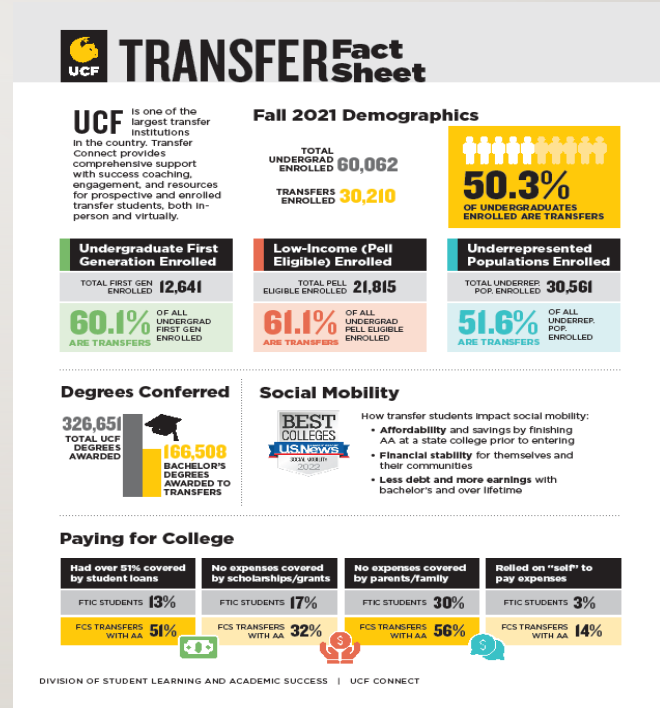
Associate Director,
Transfer Center
The University of Central Florida



UNIVERSITY PROFILES

Portland State University

- Total Enrollment: 22,014
- Undergraduate Enrollment: 17,237
- Students receiving Financial Aid: 65%
- Pell grants: 46%
- Student Diversity
 - White: 50.2%
 - BIPOC: 39.4%
 - Latino: 18%
 - Asian: 9.1%
 - Black or African American: 4.3%
 - Native American: 1.3%
 - Multi-Ethnic: 6.1%
 - Native Hawaiian/Pacific Islander: 0.5%
 - Other: 4.9%
 - First Generation Students: 47.4%
 - BIPOC First-year students: 58.2%
 - Students with Children: 25%
- **Close to 60% of degree seeking undergraduate students are transfer students!**

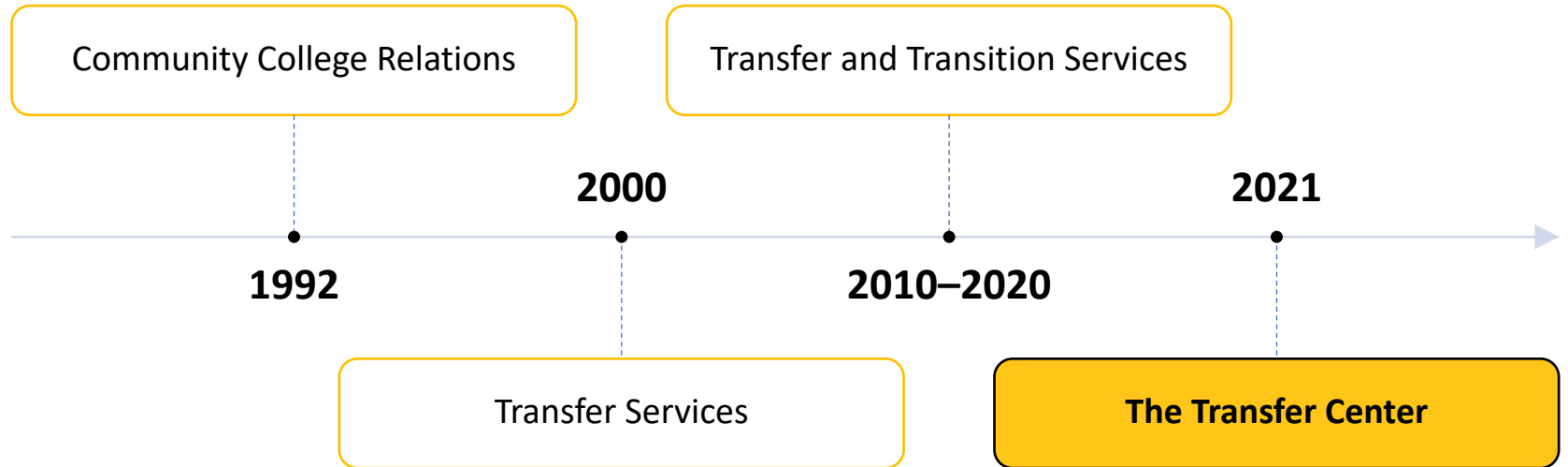


The UCF Transfer Center

Transfer Connect: The hub for transfer support and connection at the University of Central Florida



The Evolution of UCF's Transfer Centers



**Transfer
Center**

THE EVOLUTION OF TRANSFER CENTERS:
A FUTURES-THINKING APPROACH TO BUILDING TRANSFER CENTERS AND SUPPORT SERVICES

SOFT LAUNCH

Fall 2021



GRAND OPENING

Spring 2022



**Transfer
Center**

A FUTURES-THINKING APPROACH TO BUILDING TRANSFER CENTERS AND SUPPORT SERVICES

THE EVOLUTION OF TRANSFER CENTERS:
AND SUPPORT SERVICES

TRANSFER CENTER

What do we do?

Our mission is to support the seamless transition and successful integration of all transfer students into the UCF community.

The Transfer Center is the hub for all transfer students on-campus to receive transition support, access opportunities, educational experiences, and interact with fellow transfer students.



Visiting the Transfer Center

Study
Rooms

Success
Coaching

Transfer
PeerKnights

Lounge
Space

Community
Connections

Social
Events



**Transfer
Center**

A FUTURES-THINKING APPROACH TO BUILDING TRANSFER CENTERS AND SUPPORT SERVICES

THE EVOLUTION OF TRANSFER CENTERS:

The Pro-Staff

Director, Angelia Smith

Associate Director, Bernard Huggins

Success Coach, Beth Ganz

Administrative Assistant, Aisha Balfour





The Student Staff

Graduate Assistants

PeerKnight Coaches

Student Assistants

THE TRANSFER SQUAD!





TRANSFER CENTER

Location:

UCF Main Campus

Trevor Colbourn Hall, Room 215

Open Office Hours:

Monday to Friday

9:00 a.m. to 5:00 p.m.

transfercenter@ucf.edu

<https://connect.ucf.edu/transfer-center/>

Follow us!



[@TransferConnectToUCF](https://www.instagram.com/TransferConnectToUCF)

TRANSFER CENTER AT PSU

THE EVOLUTION OF TRANSFER CENTERS:
A FUTURES-THINKING APPROACH TO BUILDING TRANSFER CENTERS AND SUPPORT SERVICES

COMMUNITY & RESOURCES FOR TRANSFER & RETURNING STUDENTS



HOW IT STARTED ...

THE EVOLUTION OF TRANSFER CENTERS:
A FUTURES-THINKING APPROACH TO BUILDING TRANSFER CENTERS AND SUPPORT SERVICES

GRAND OPENING FEBRUARY 2020





Randi Harris



Shayna Snyder (she/they)



Lori Coulter



Regina Arellano



Kara Hayes

HOW IT'S GOING!

THE EVOLUTION OF TRANSFER CENTERS:
A FUTURES-THINKING APPROACH TO BUILDING TRANSFER CENTERS AND SUPPORT SERVICES





TRANSFER & RETURNING STUDENT RESOURCE CENTER

Portland State welcomes more transfer students than any college in Oregon. The Transfer & Returning Student Resource Center is here to help transfer students smoothly transition to PSU and to support them on their path to degree completion.

We offer academic and career advising to incoming transfer and returning students (*students returning to PSU after a break in their undergraduate degree*), assistance in accessing PSU resources and services, as well as workshops and events specifically for transfer and returning students.





We're on your Success Team!

There are also 12
student employees
who support our
transfer and
returning student
community!



Regina Arellano, Transfer & Returning
Student Advisor



Noah Spencer, Finish Line Coordinator



Shayna Snyder, Transfer & Returning
Student Advisor



Randi Harris, Director



Kara Hayes, Student Success Manager

Transfer & Returning Student ADVISING

We are here to help you make the most of your transition to PSU!

Our Transfer & Returning Student Advisors provide unique advising- we help you determine what classes to take before you transfer or support you as you return to higher education after a significant break to complete an undergraduate degree. We can help you identify and **connect** with appropriate resources as well as help you **explore** something new and fun to do at PSU. At the Transfer and Returning Student Resource Center, we work in **collaboration** with transfer admissions, financial services, student services, resource centers, and the University Career Center to support your success.



Portland State
Transfer & Returning
Student Resource Center

DROP-IN TRANSFER ADVISING

VIRTUAL: MON. - THURS., 3 - 4pm
Join: bit.ly/trsrc-advising-qas

IN PERSON: WED., 12-2pm
FMH 342

15 Minutes: Quick Questions | Resources | Next Steps



TRSRC Programming & Workshops


The TRSRC has a robust offering of online support, programs, and community events geared towards **academic support, skill-building, and building community** for prospective and current transfer and returning students. <https://www.pdx.edu/transfer-center/events>


- In-Person & Virtual Gatherings
- Academic Support & Skill-Building Workshops
- Community & Social Events
- Resource Knowledge Info Sessions
- Ongoing Partnerships with Campus Visits, New Student Orientation Programs, & PSU Resource Centers

Winter Transfer Climb Night with PSU's Outdoor Program! 




Tuesday, Jan 31, 4:30 - 6:00pm, ASRC 3rd floor
No experience necessary!

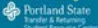


SMITH MEMORIAL STUDENT UNION RESOURCE TOUR 

THURSDAY, JAN. 12
12 - 1PM
MEET IN FMH 342

SIGN UP BY
JAN. 10
BIT.LY/PCN-SMSU-JAN23

LEAD BY OUR PBA CONNECTION SPECIALIST, KIGRAM! 



THE CENTER FOR STUDENT HEALTH & COUNSELING AND TRSRC PRESENT:

The Need for Hibernation: Mental Health Tools for Winter Term

12-1:30PM | TUESDAY, FEBRUARY 7TH

JOIN IN ANYTIME:
12-12:30PM: UNDERSTANDING SEASONAL AFFECTIVE DISORDER & STRESS
12:30-1PM: COPING STRATEGIES
1-1:30PM: PRACTICING SELF-COMPASSION

Zoom Link: <https://bit.ly/trsrc-shac-wi23>



DEADLINES & 

DOUGHNUT (holes) 

WED MAR 15
10AM - 12PM
FMH 342 



The Transfer and Returning Student Resource Center is the place to connect you to PSU and support your goals - we are here to help you thrive!

Location: Fariborz Maseeh Hall, Room 342

Phone: 503-725-2136

Email: transferstudents@pdx.edu;
returningstudents@pdx.edu

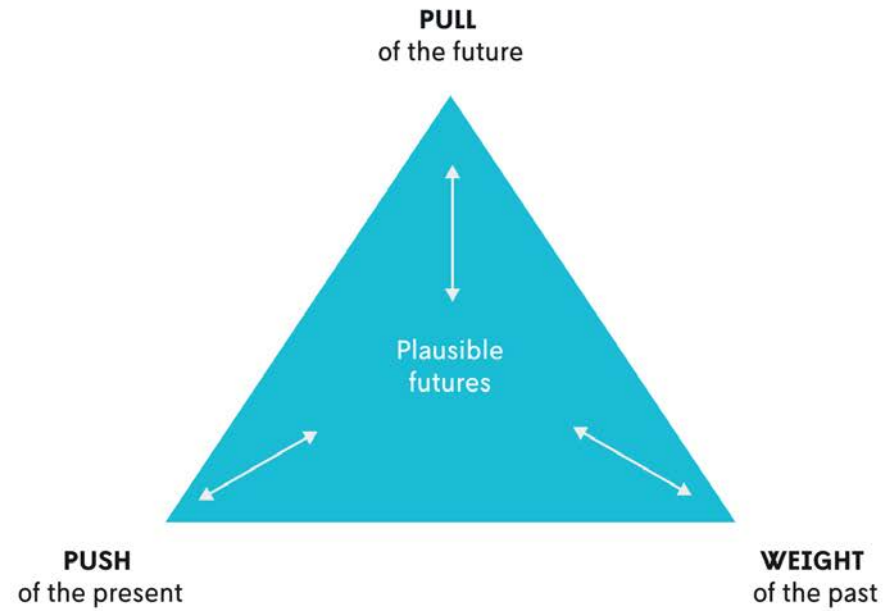
Web: <https://pdx.edu/transfer-center>



FUTURES MINDSET

THE EVOLUTION OF TRANSFER CENTERS:
A FUTURES-THINKING APPROACH TO BUILDING TRANSFER CENTERS AND SUPPORT SERVICES





Inayatullah, 2008

Forchheimer (2022) states that “for futures thinking to be valuable it has to be grounded in present-day facts that with synthesis, sensemaking, creativity, and visualization are put into plausible, provocative stories about possible futures that resonate and inspire us to act differently today.”

DISCUSSION

THE EVOLUTION OF TRANSFER CENTERS:
A FUTURES-THINKING APPROACH TO BUILDING TRANSFER CENTERS AND SUPPORT SERVICES

What are the biggest challenges you have encountered in the past 6 months in regard to support and advocacy for transfer students?

Where do you draw your inspiration for the services your center can offer?

What do you see as emerging opportunities?

How can we influence the future we want for our transfer centers and services?

What connections are necessary for us to realize our collective vision?

QUESTIONS & CONVERSATION

Randi Harris

Director, Transfer & Returning
Student Resource Center
Portland State University



rap@pdx.edu

Kara Hayes

Student Success Manager, Transfer &
Returning Student Resource Center
Portland State University



kahayes@pdx.edu

Bernard Huggins

Associate Director,
Transfer Center
The University of Central Florida



bernard@ucf.edu

REFERENCES

- Forchheimer, S. (2022) *What exactly is futures thinking?* Institute for the Future. <https://www.iftf.org/future-now/article-detail/what-exactly-is-futures-thinking/>
- Inayatullah, S. (2008). Six pillars: futures thinking for transforming. *Foresight*, 10(1), 4–21. <https://doi.org/10.1108/14636680810855991>
- St. Amour, M. (2020). *Low-income community college students most likely to cancel plans*. Inside Higher Ed. <https://www.insidehighered.com/news/2020/12/10/analysis-low-incomecommunity-college-students-most-likely-report-canceling-college>
- Yazdani, N., McCallen, L. S., Hoyt, L. T., & Brown, J. L. (2021). Predictors of economically disadvantaged vertical transfer students' academic performance and retention: A scoping review. *Journal of College Student Retention: Research, Theory & Practice*, 15210251211031184. <https://doi.org/10.1177/15210251211031184>